

Calhoun County Comprehensive Plan

State of the County



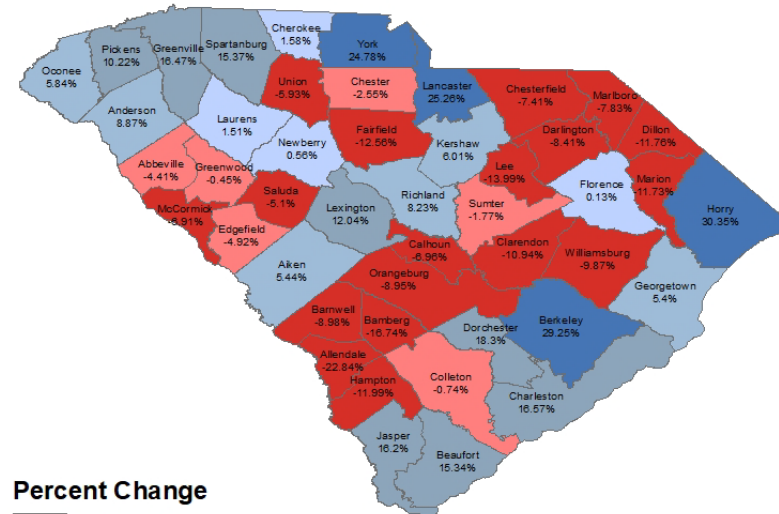
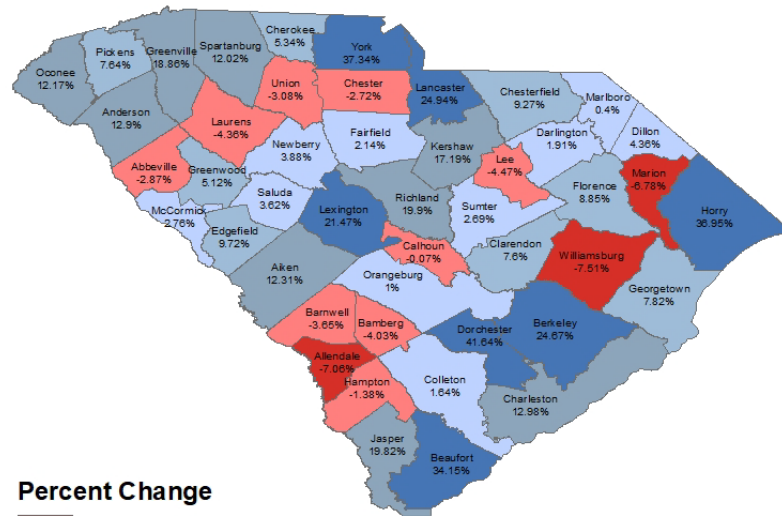
- ▶ Rural fringe county
- ▶ Population has changed very little since 1950s
- ▶ Job losses in agriculture – mechanization and shift in products
- ▶ Manufacturing job growth in northern Calhoun
- ▶ Population shift from south to north
- ▶ Aging Population

SC Population Trends

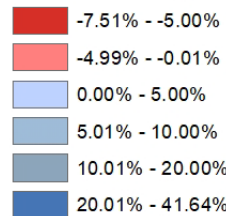
Percent Change in Census Population

2000 to 2010

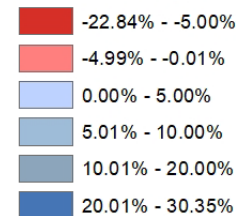
2010 to 2020



Percent Change

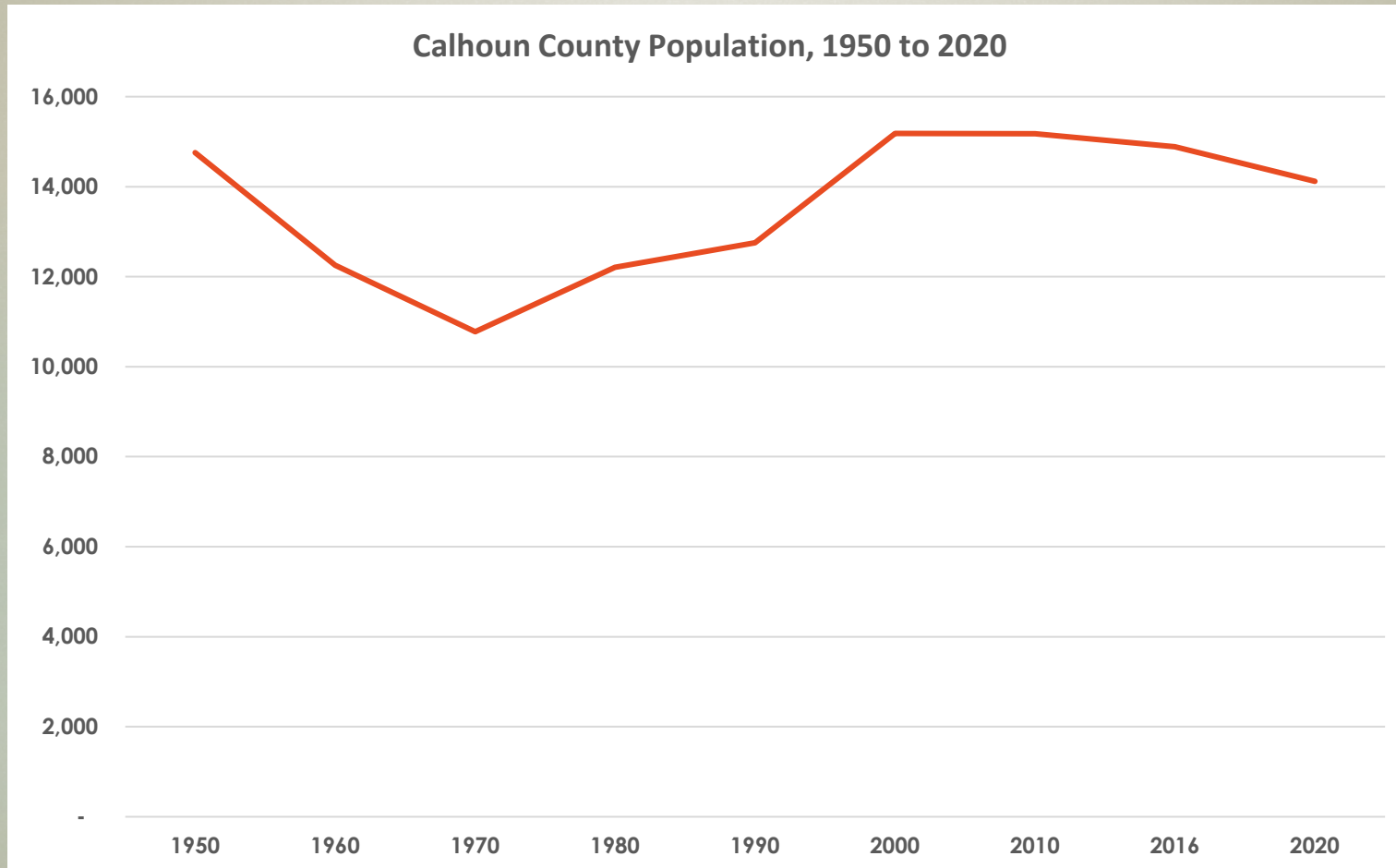


Percent Change

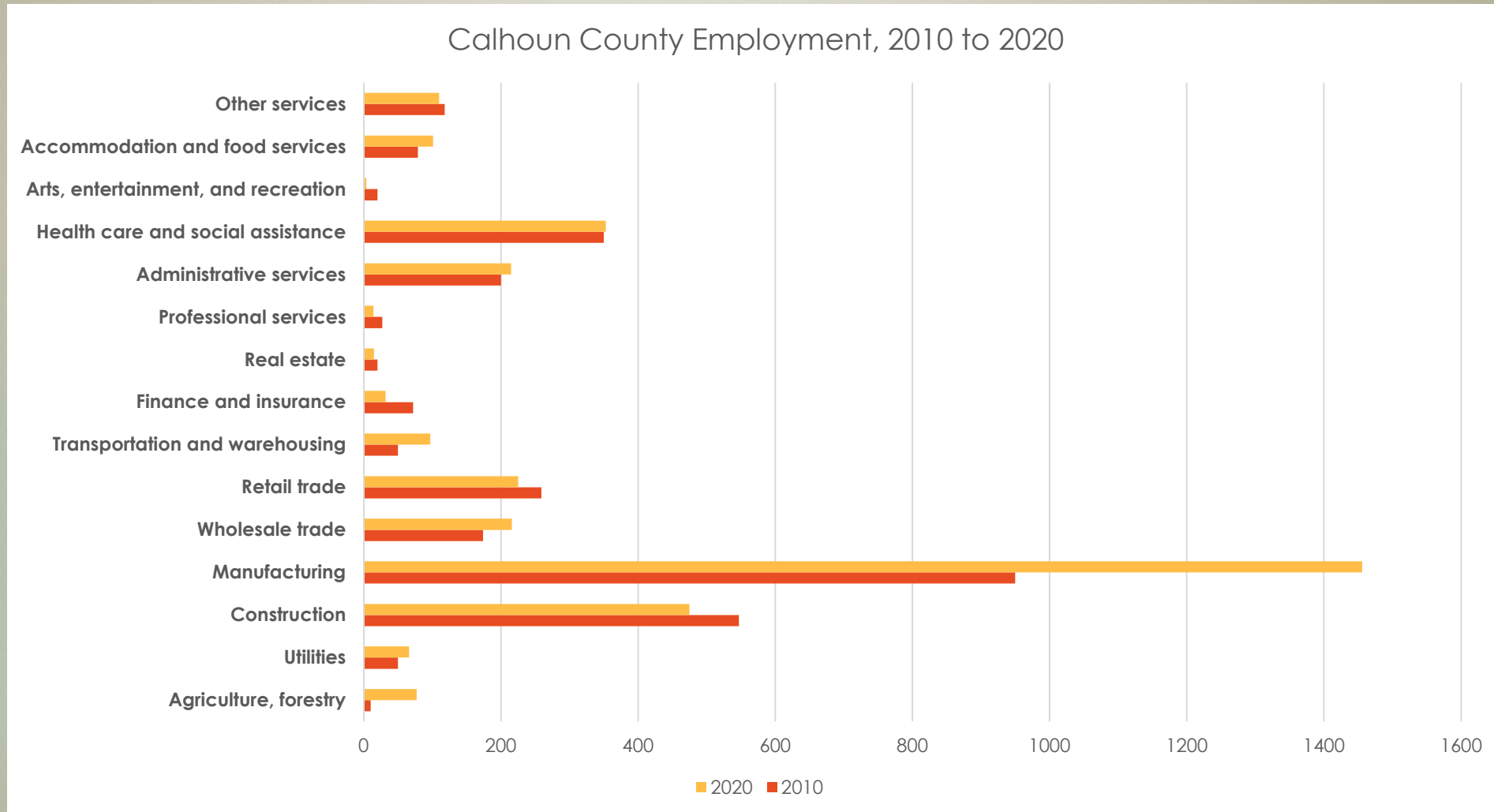


Source: US Census Bureau Decennial Census Data

Calhoun County Population Trend



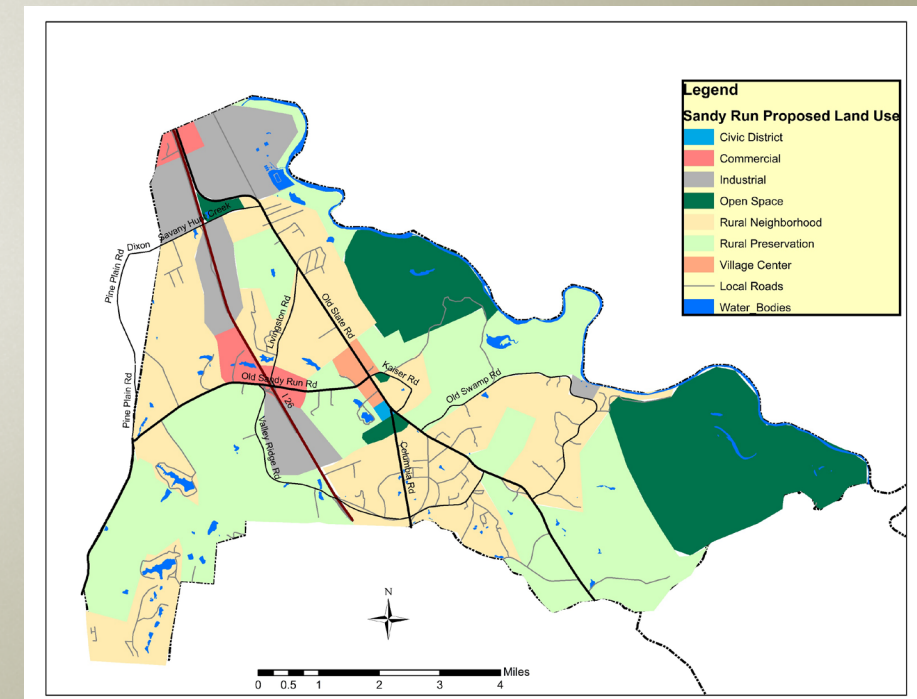
Calhoun County Economy



Source: County Business Patterns

Sandy Run Area Plan

- ▶ Identified transportation and infrastructure capacity to support growth
- ▶ Examined existing land use patterns
- ▶ Engaged citizens in discussions about their preferences for growth and development
- ▶ Identified a preferred growth pattern
- ▶ Created a future land use map for the northern part of the county
- ▶ Led to zoning changes in the planning area



Comprehensive Planning Process

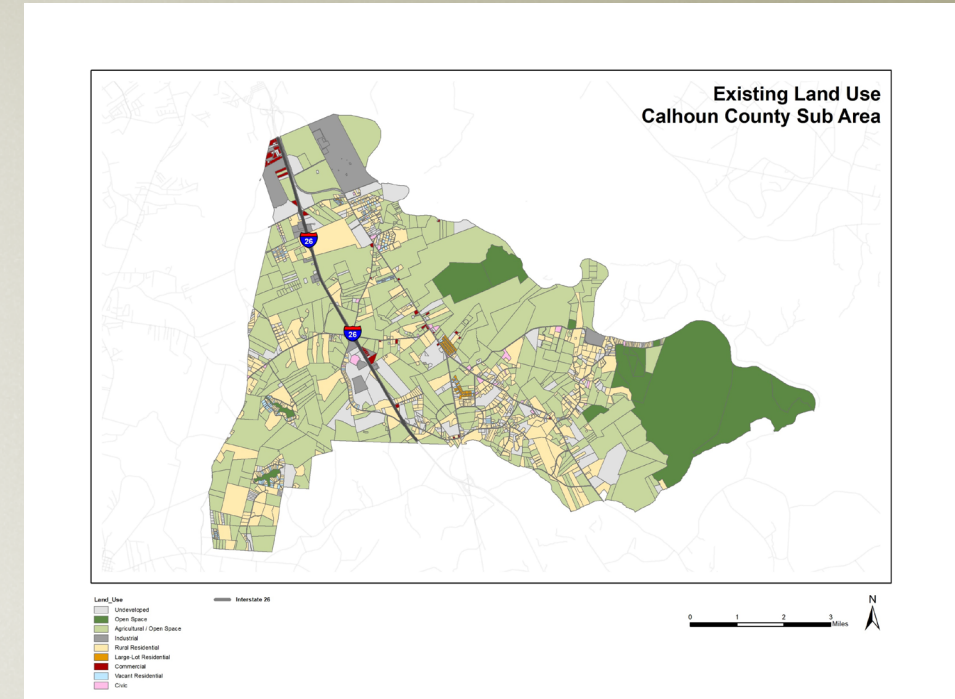
- ▶ Staff prepares data, maps and background materials for each element
- ▶ Planning Commission reviews and provides direction on goals and objectives
- ▶ Staff prepares draft of each of the 10 plan elements
- ▶ Public engagement activities
 - ▶ Scheduled public meetings
 - ▶ Presentations to community groups
 - ▶ Information on County Website



Comprehensive Plan Elements

▶ Ten Elements

- ▶ Population
- ▶ Housing
- ▶ Natural Resources
- ▶ Cultural Resources
- ▶ Land Use
- ▶ Community Facilities
- ▶ Transportation
- ▶ Economic Development
- ▶ Resiliency (ability to survive, adapt, and grow despite “acute shocks” and “chronic stress”)
- ▶ Priority Investment



Planning Tools and Public Involvement Methods

- ▶ Strategic planning analysis of the county.
- ▶ “Expand the circle” of people involved and informed – reach out to friends and colleagues in the community to encourage participation.
- ▶ Presentations to community groups such as church men's clubs, women's clubs, civic groups.
- ▶ Scheduled community meetings to provide updates on plan contents and obtain feedback and reactions from citizens
 - ▶ Group exercises and “voting” on different ideas
 - ▶ Comment forms
 - ▶ Informational materials on the County Website



SWOT: Strengths, Weaknesses, Opportunities and Threats

- ▶ Strategic planning exercise designed to get a group to examine their business or organization or community, discuss ways to improve
- ▶ Helps clarify the long-term needs and priorities of the community
- ▶ Similar to managing people: Build on Strengths and Manage Weaknesses



Desired Comp Plan Outcomes



- ▶ Informed Community Consensus
- ▶ Clear Goals and Objectives
- ▶ Effective strategies to achieve goals and objectives

Your Homework

- ▶ Think about SWOT
- ▶ Identify people who should be involved in developing the plan
- ▶ Identify groups that we should meet with