

## CHAPTER 1

# Population

Like many rural counties across South Carolina, Calhoun County has seen little population growth since the middle of the 20<sup>th</sup> century. Many factors have contributed to this, including the decline of textile manufacturing, mechanization and other changes in agriculture that eliminated many farm jobs, lower birth rates, and a nationwide shift of population and jobs to metropolitan areas.

Table 1.1 and the associated graph below chart the changes in Calhoun County population and demographics. Population declined significantly from 1950 to 1970, and then increased through 2000. Population has declined since 2010 and now is slightly lower than in 1950. Median age has increased significantly since 1990, reflecting lower birth rates and increased life expectancy.

The race and ethnicity of the population since 1990 also is shown in Table 1.1. Generally, since 1990, black population has declined while white population has increased. All other racial groups – Asian, American Indian or Alaska Native, Native Hawaiian or Pacific Islander -- were combined in this analysis, as very small numbers of these other races are found in the county. The sharp increase in other population in 2010 and 2020 is primarily due to a change in race classification in the Census, which now collects and reports persons who are of two or more races; the increase is primarily in persons who report both white and black or African American races, or both white and American Indian or Alaska native.

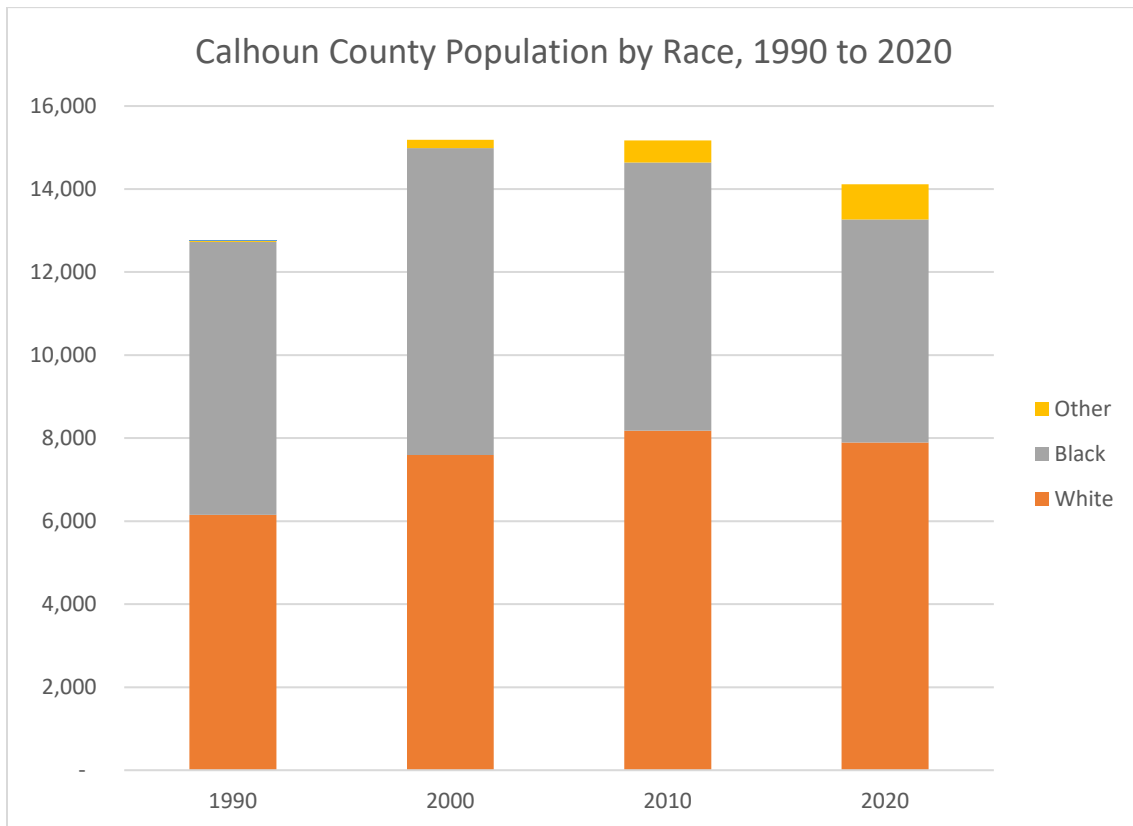
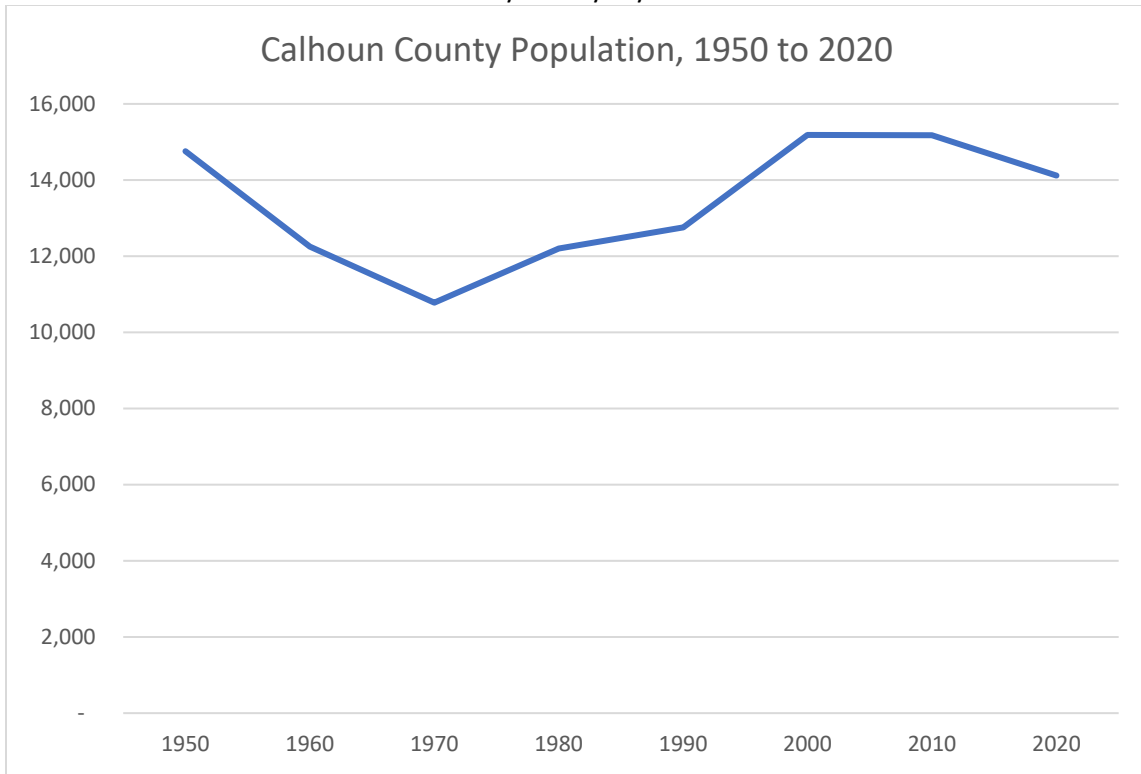
Hispanic ethnicity is a separate classification from race. A person may be of any race and have Hispanic ethnicity. Hispanic population in the county increased significantly from 1990 to 2010 but has been relatively unchanged since 2010.

**Table 1.1**  
**Calhoun SC Population, 1950 to 2020**

Year	Total Population	White	Black or African American	Other	Hispanic	Median Age
1950	14,753	<i>Detailed data was not obtained for these years</i>				
1960	12,256					
1970	10,780					
1980	12,206					
1990	12,753	6,152	6,575	26	39	33.0
2000	15,185	7,597	7,393	195	212	38.9
2010	15,175	8,177	6,459	539	458	43.4
2020	14,119	7,896	5,372	851	487	na

Sources: 1950 through 2020 Census

2020 American Community Survey 5-year Estimates



Population decline since 2000 has been greater in Calhoun County's two towns than in the unincorporated portion of the county. The Town of Cameron has lost over 11 percent of its population since 2000, while St. Matthews has lost almost nine percent. The unincorporated part of the county has declined by 6.5 percent during the same period, while the population loss for the county as a whole has been 7.0 percent since 2000.

**Table 1.2**  
**City and County Population Change, 2000 to 2020**

<b>Area</b>	<b>2000</b>	<b>2010</b>	<b>2020</b>	<b>Percent Change 2000 to 2010</b>	<b>Percent Change 2010 to 2020</b>
Town of Cameron	446	424	376	-4.9%	-11.3%
Town of St. Matthews	2,088	2,021	1,841	-3.2%	-8.9%
Unincorporated Calhoun County	12,651	12,730	11,902	0.6%	-6.5%
Total Calhoun County	15,185	15,175	14,119	-0.1%	-7.0%

Source: 2000 through 2020 Census

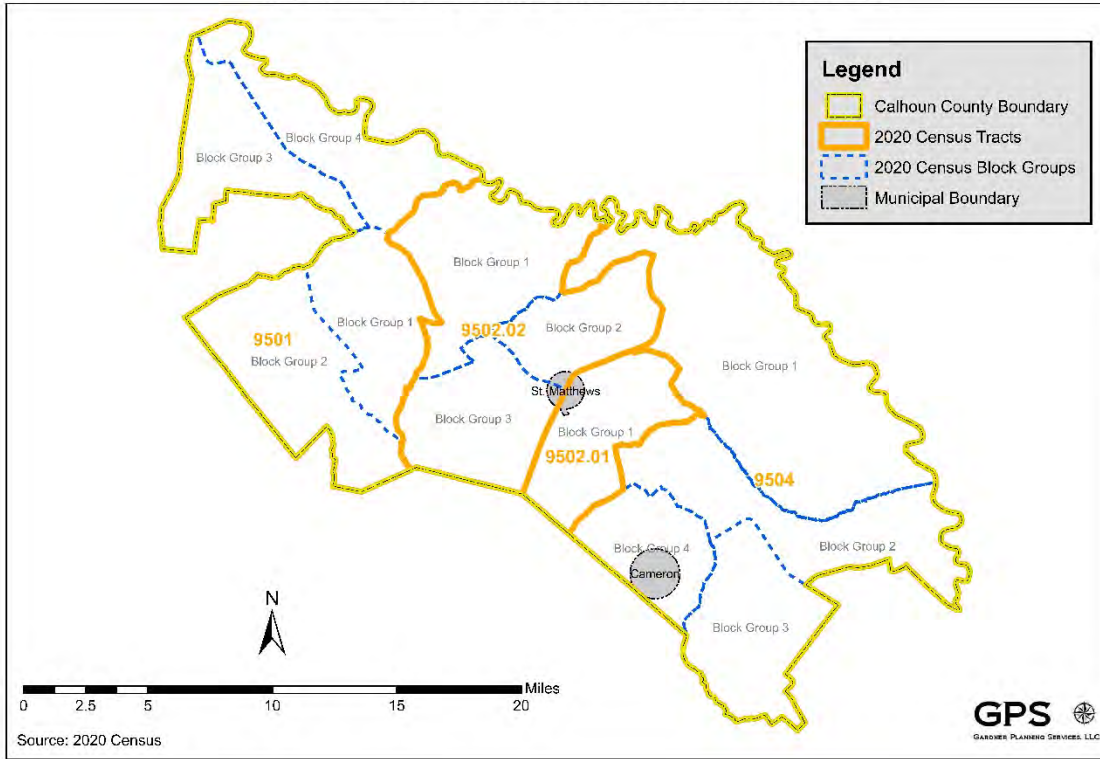
To better illustrate the patterns of population change in the County, a series of maps have been created showing population characteristics and changes at the Block Group level. Map 1.1 below shows the census tracts and block groups in Calhoun County; each of the four census tracts is divided into two to four block groups by the Census.

Maps 1.2 through 1.8 below illustrate the county's population characteristics by block group. These maps show total population, population density, and population change from 2010 to 2020. The distribution of population by race and Hispanic ethnicity also are illustrated.

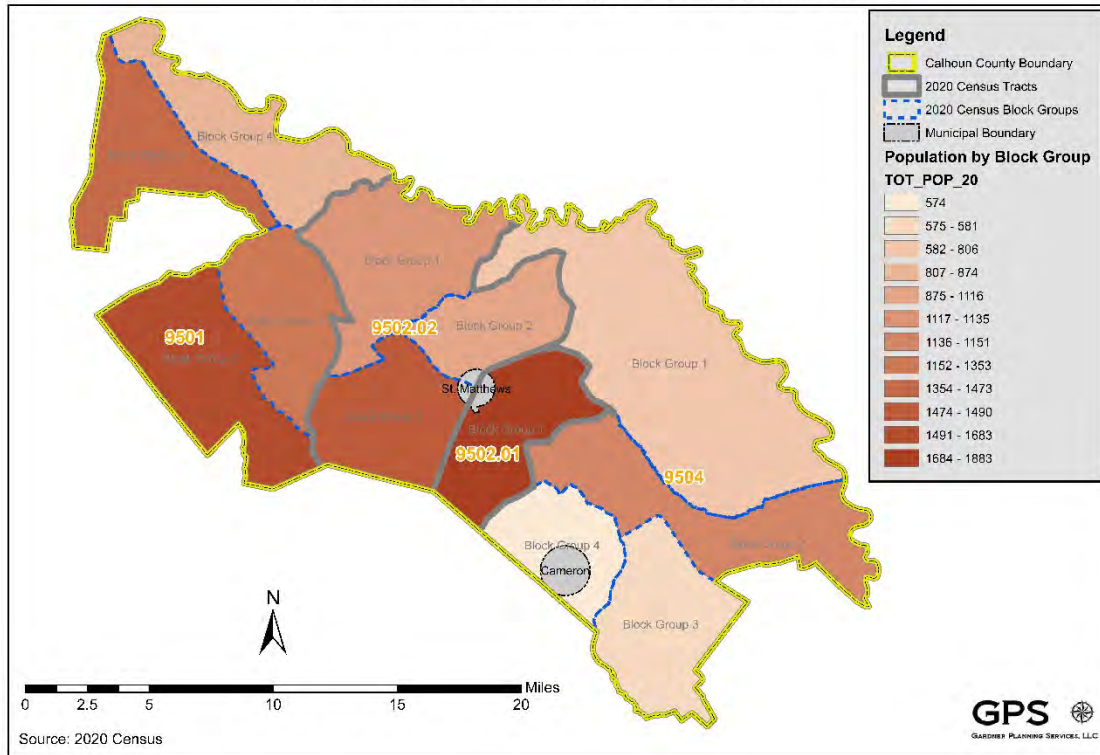
Additional narrative description of these maps will be provided in the final draft of this report.

Additional data and maps will be presented in the final draft of this report to show additional population characteristics to identify disadvantaged population groups. Persons with disabilities, elderly persons, persons living in poverty, and households with zero cars will be mapped in the final version of this report.

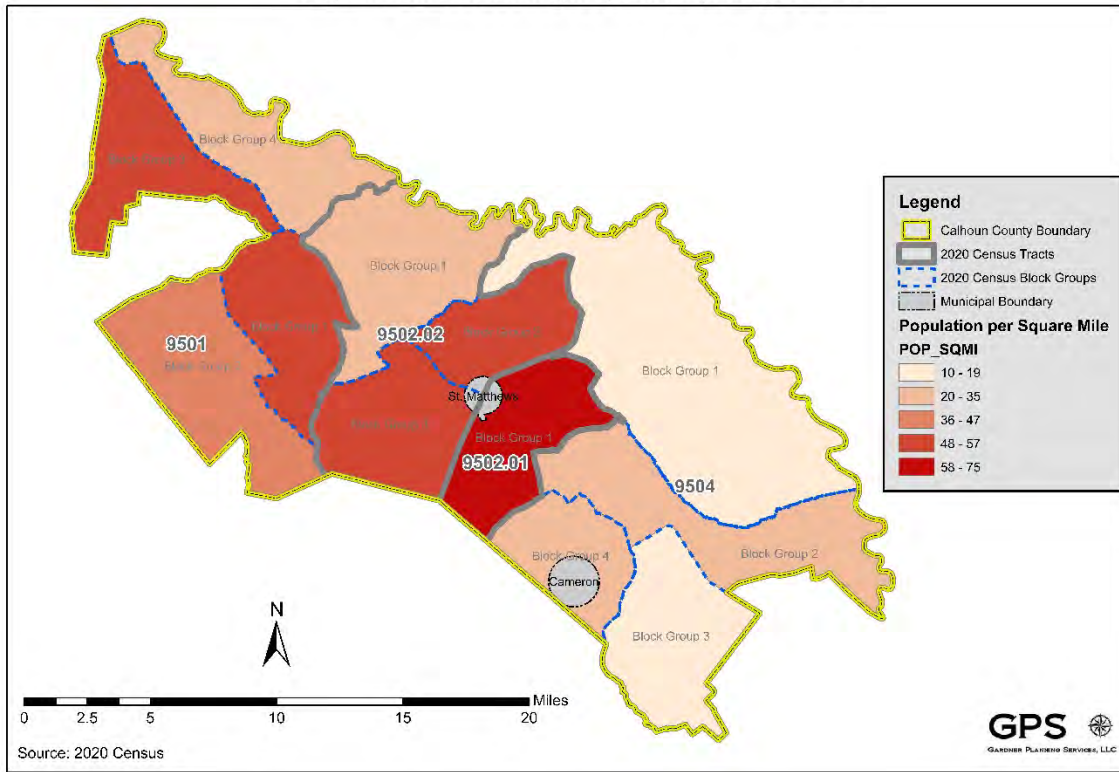
Map 1.1 Calhoun County Census Tracts and Block Groups



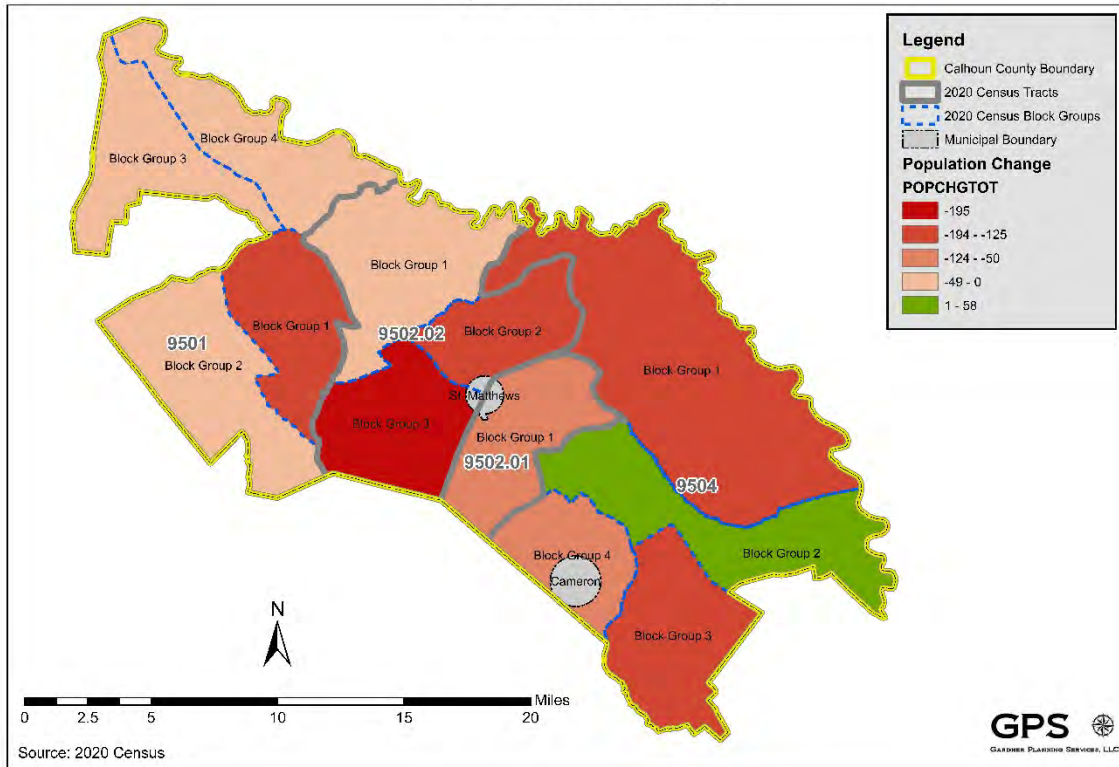
Map 1.2 Calhoun County Population by Block Group



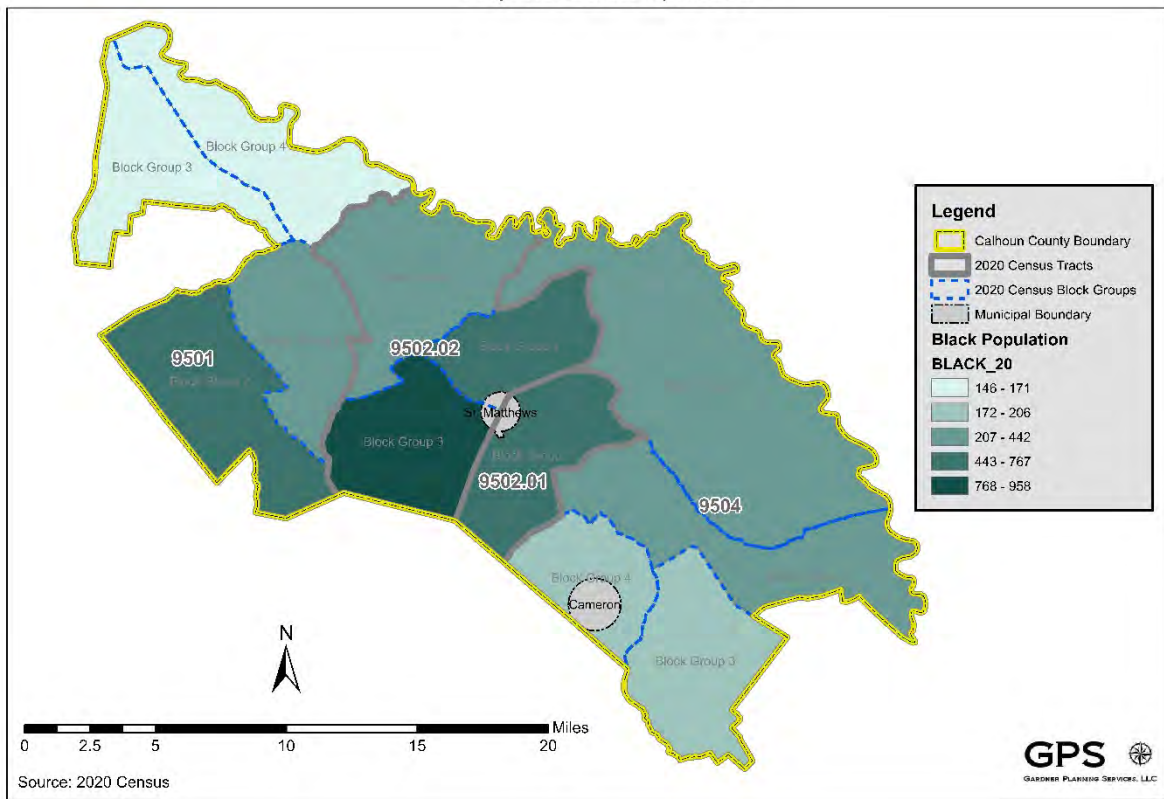
Map 1.3 Calhoun County Population per Square Mile



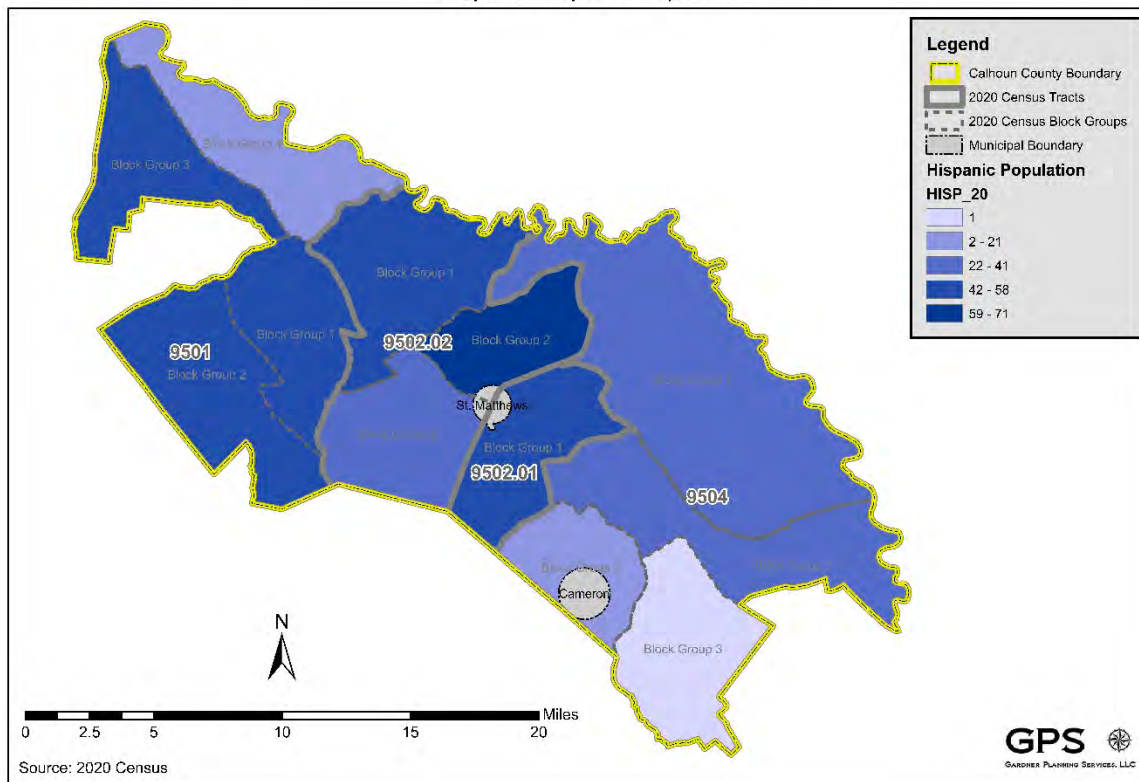
Map 1.4 Population Change



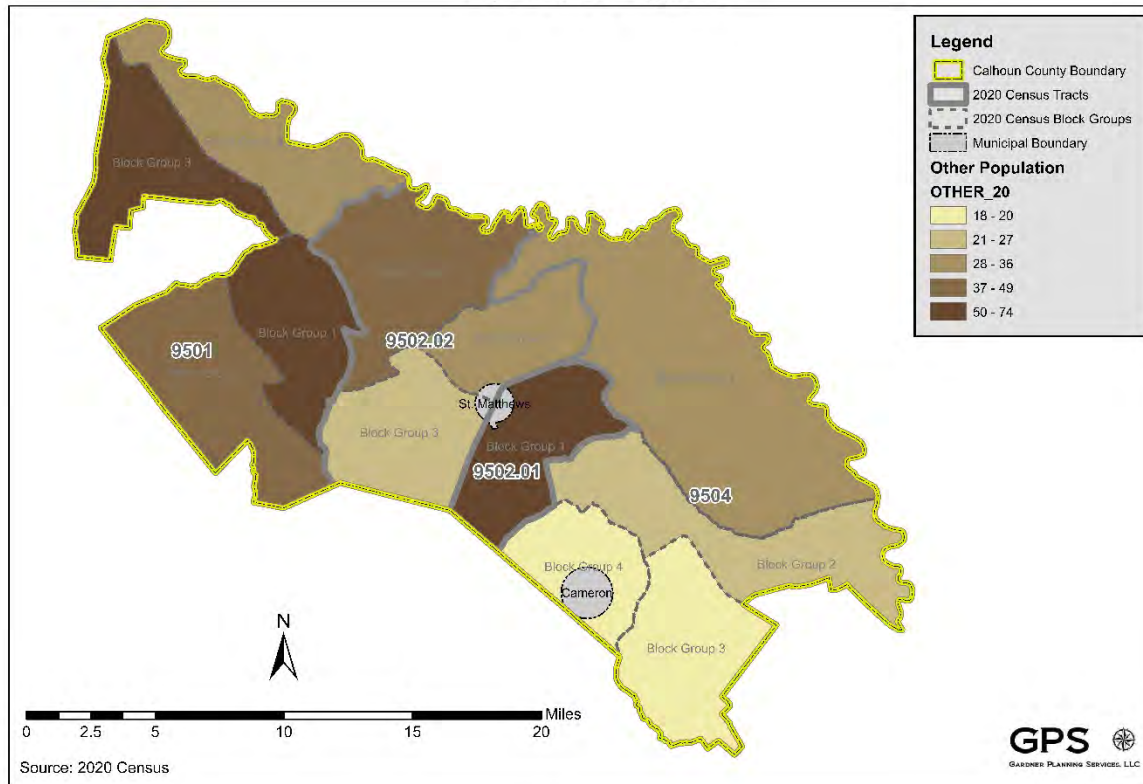
Map 1.5 Black Population



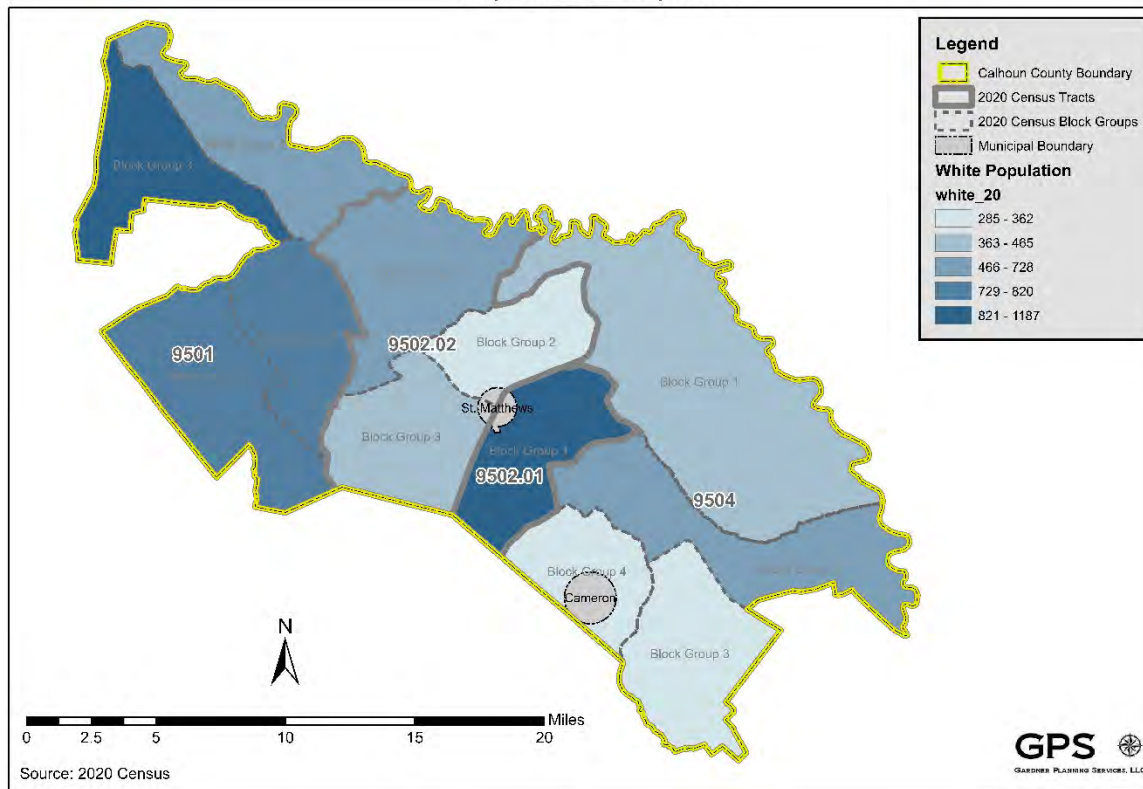
Map 1.6 Hispanic Population



Map 1.7 Other Population



Map 1.8 White Population



### Goals, Objectives and Strategies

Goals, objectives and strategies related to the county's population will be developed based on input from the County Planning Commission and from comments received in public meetings that will be held during the development of the comprehensive plan.